



ASSOCIATE in TECHNOLOGY DEGREE

Vocational-Technical Institute

Specialization:

Mortuary Science and Funeral Service

Mortuary science and funeral service education offers students an opportunity to prepare for professional service to society as a licensed funeral director or embalmer. The Mortuary Science and Funeral Service Program at the Vocational-Technical Institute is fully approved by the American Board of Funeral Service Education and the Illinois State Department of Registration and Education. Satisfactory completion of the curriculum meets the Illinois state requirements for eligibility to write examinations for licensure in Illinois.

Career Opportunities

Opportunity for employment in funeral service is excellent. Approximately 65,000 licensed employees are engaged in funeral service in over 24,000 funeral homes in the United States. Although funeral service has come to be largely a field of interest appealing primarily to men, approximately one percent of all persons holding valid licenses are female. Nationwide, 1,800 persons enter the funeral service profession annually.

A typical licensee has exceptional opportunity to participation in the ongoing affairs of a community, a unique and rewarding opportunity to be of service to those who come to him in need, and the advantages of stability and community respect.

High School Preparation

High school students interested in mortuary science and funeral service education should avail themselves of high school opportunities to demonstrate scholastic proficiency in a broad variety of high school subjects including: mathematics, chemistry, biology, botany, communication skills, social studies, government, accounting and business law. In addition, the high school student should demonstrate his ability to work with others and provide leadership in student interest groups.

What to Study

In earning the Associate Degree in Mortuary Science and Funeral Service, a student must complete a prescribed curriculum consisting of preprofessional and professional courses.

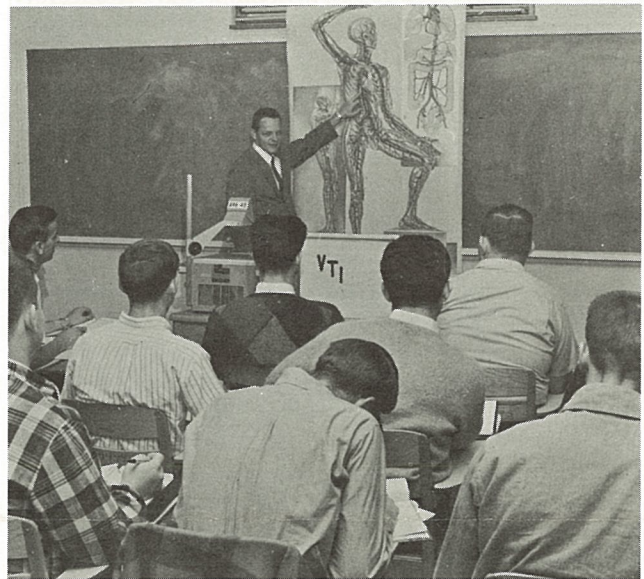
Preprofessional Courses

A majority of the preprofessional courses are completed during the students first four quarters of college study. Courses included in the classification include communication skills, physical and biological sciences, social

and behavioral sciences, business skills including accounting and business law. The preprofessional courses are designed to develop understandings and skills in communication and to broaden and deepen appreciation for the world around us, as well as to provide a foundation for subsequent specialized instruction.

Professional Courses

The professional courses required to complete the mortuary science and funeral service curriculum are



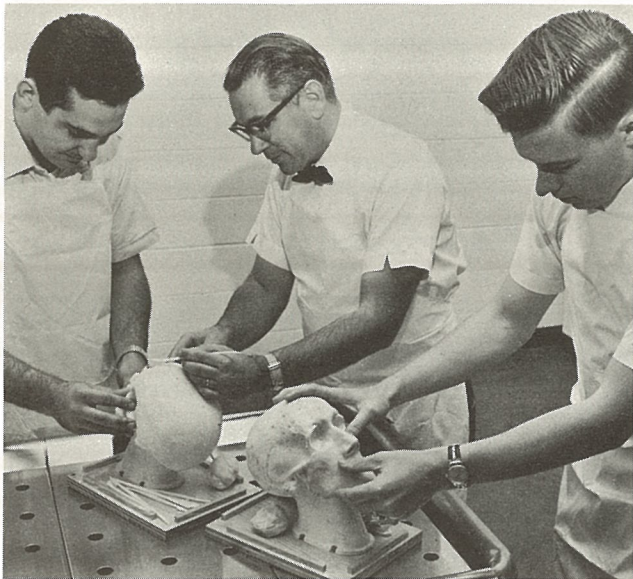
Study of anatomy

**Curriculum
Series**

Southern Illinois University

114C

directly related to the functions and responsibilities that a funeral director and embalmer must assume. Included are theoretical and practical study of funeral history, funeral customs, embalming chemistry, public health laws and regulations, restorative art, embalming, pathology, funeral service psychology and mortuary management.



Restorative art laboratory

Upon completion of all previously mentioned professional courses, students are eligible for matriculation in the funeral service internship and seminar courses. These courses are an integral part of the mortuary science and funeral service curriculum and are executed through intern experience in a selected Illinois funeral home for a period of one quarter. The function of the internship program of instruction is to relate the theoretical and practical instruction of the classroom into a workable and meaningful whole.

Student Activities

Sigma Phi Sigma, professional funeral service fraternity has an active chapter on the Southern Illinois University campus. Students enrolled in the Mortuary Science and Funeral Service curriculum are eligible for active membership. Monthly meetings are conducted which center on the furtherance of professional knowledge of the student. Activities include dinner meetings and field trips designed to enhance the program of the fraternity. Sigma Phi Sigma offers an opportunity to make new friends and share experiences with students and faculty members who have similar interests and provides an opportunity to vicariously learn more about one's chosen profession.

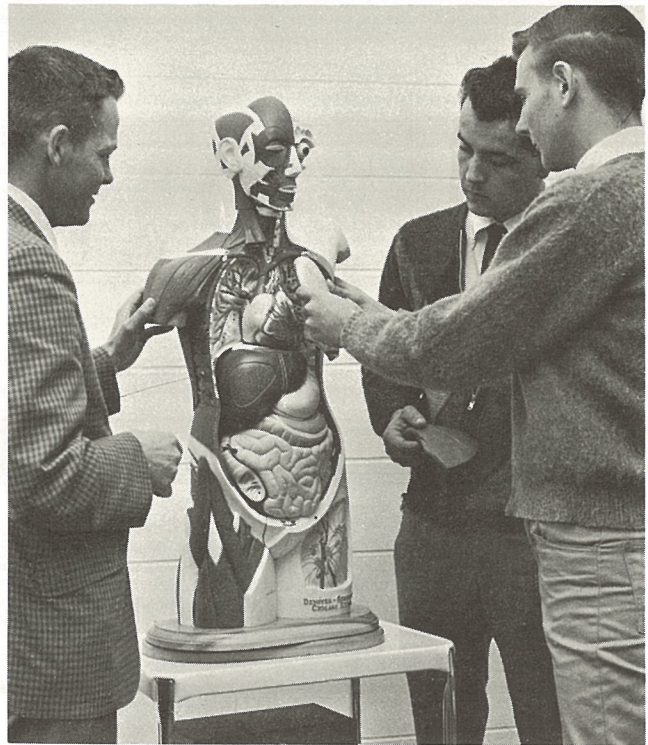
Scholarships and Financial Assistance

Southern Illinois University's financial assistance program is organized to function as an integral part of the

student's total educational experience. As far as possible an attempt is made to assist needy and deserving students. The program includes scholarships, awards, prizes, grants-in-aid, student loan funds, and the student work program.

For further information write to:

E. J. Simon, University Dean
 Division of Technical and Adult Education
 Southern Illinois University
 Carbondale, Illinois 62901



Learning body structure

CURRICULUM SERIES NUMBER 114C, issued by Central Publications, Southern Illinois University. This series is intended as a guide to prospective students of Southern Illinois University in choosing a career and selecting a course of study leading to the realization of a chosen career. Other folders in this new series will be issued intermittently and will be sent on request as they become available. Numerical coding will be followed by C (Carbondale Campus), E (Edwardsville Campus) for courses of study offered on one campus. Absence of C or E denotes offerings on both campuses. For additional copies of this series, class schedules, or other bulletins, write to Central Publications, Southern Illinois University, Carbondale, Illinois 62901.